

SXD Technical Data

Stand-on Double Deck High Lift Pallet Truck

SXD 20



SXD Stand-on Double Deck High Lift Pallet Truck

Double load – twice as easy

This specification sheet, which conforms to VDI guideline 2198, provides the technical values for the standard equipment only. Different tyres, other masts, additional equipment etc. may produce different figures.

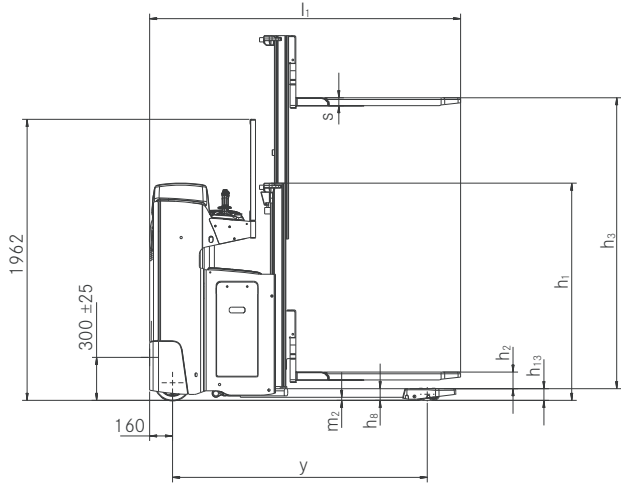


Distinguishing marks	1.1	Manufacturer			STILL	
	1.2	Manufacturer's type designation			SXD 20	
	1.3	Drive			Electric	
	1.4	Operation			Standing	
	1.5	Nominal load	Q	kg	2000	
	1.6	Load centre	c	mm	600	
	1.8	Load distance	x	mm	860	
	1.9	Wheel base	y	mm	1780	
	Weights	2.1	Service weight incl. battery		kg	1348
2.2		Axle load, laden	drive end/load end	kg	1273/2075	
2.3		Axle load, unladen	drive end/load end	kg	943/405	
Tyres/chassis	3.1	Tyres			Polyurethane	
	3.2	Tyre size	drive end	mm	∅ 254 x 102	
	3.3	Tyre size	load end	mm	∅ 85 x 85 (∅ 85 x 60)	
	3.4	Support rollers		mm	∅ 2 x 140 x 50	
	3.5	Number of wheels (x = driven)	drive end/load end		1 x / 1/2 (1 x / 1/4)	
	3.6	Track width	drive end/load end	b ₁₀ /b ₁₁	mm	484/380
Basic dimensions	4.2	Height	mast lowered	h ₁	mm	See mast table
	4.3	Free lift		h ₂	mm	See mast table
	4.4	Lift		h ₃	mm	See mast table
	4.5	Height	mast raised	h ₄	mm	See mast table
	4.6	Initial lift		h ₅	mm	125
	4.10	Height of wheel arms		h ₈	mm	80
	4.15	Fork height, lowered		h ₁₃	mm	86
	4.19	Overall length		l ₁	mm	2170
	4.20	Length including fork backs		l ₂	mm	1020
	4.21	Overall width		b ₁	mm	770
	4.22	Fork dimensions		s/e/l	mm	50/180/1150
	4.23	Support arm dimensions		s/e/l	mm	75/150/1115
	4.24	Fork carriage width		b ₃	mm	710
	4.25	Overall fork width		b ₅	mm	560
	4.26	Width between wheel arms		b ₄	mm	196
4.32	Ground clearance, centre of wheel base		m ₂	mm	20	
4.34	Working aisle width with 800 x 1200 pallet lengthways		A _{st}	mm	2640	
4.34	Working aisle width with 800 x 1200 pallet crossways		A _{st}	mm	2750	
4.35	Turning radius		W _a	mm	1950	
Performance data	5.1	Travel speed	laden/unladen		km/h	10/10
	5.2	Lifting speed	laden/unladen		m/s	0.013/0.023
	5.2.1	Lifting speed, initial lift	laden/unladen		m/s	0.064/0.089
	5.3	Lowering speed	laden/unladen		m/s	0.045/0.032
	5.3.1	Lowering speed, initial lift	laden/unladen		m/s	0.073/0.075
	5.8	Max. gradeability kB 5	laden/unladen		%	20/15/13
5.10	Service brake				Electromagnetic	
Electric engine	6.1	Drive motor, rating S2 = 60 min			kW	3
	6.2	Lift motor, rating at S3 = 10%			kW	2.3
	6.3	Battery according to DIN 43531 /35/36 A, B, C, no				3PzS
	6.4	Battery voltage/nominal capacity K _s			V/Ah	24/375
	6.5	Battery weight ±5% (depends on make)			kg	290
	6.6	Energy consumption according to VDI cycle			kWh/h	1.01
	6.7	Handling capacity			t/h	1.36
Misc.	8.1	Drive control				AC control
	10.7	Sound pressure level (driver's seat)			dB(A)	67
		Human vibrations: Acceleration in accordance with EN 13059			m/s ²	0.74

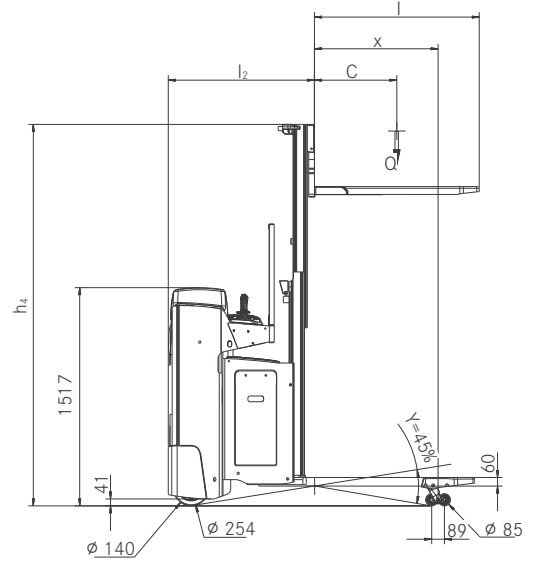
Mast Table

SXD 20			Telescopic					HiLo					
			h ₁	mm	1240	1315	1415	1465	1515	1240	1315	1415	1465
	Height	h ₁	mm	1240	1315	1415	1465	1515	1240	1315	1415	1465	1515
	Height with used free lift	h ₁ '	mm	1315	1390	1490	1540	1590	-	-	-	-	-
	Free lift	h ₂	mm	150	150	150	150	150	720	795	895	945	995
	Lift	h ₃	mm	1574	1724	1924	2024	2124	1574	1724	1924	2024	2124
	Height, mast raised	h ₄	mm	2094	2244	2444	2544	2644	2094	2244	2444	2544	2644

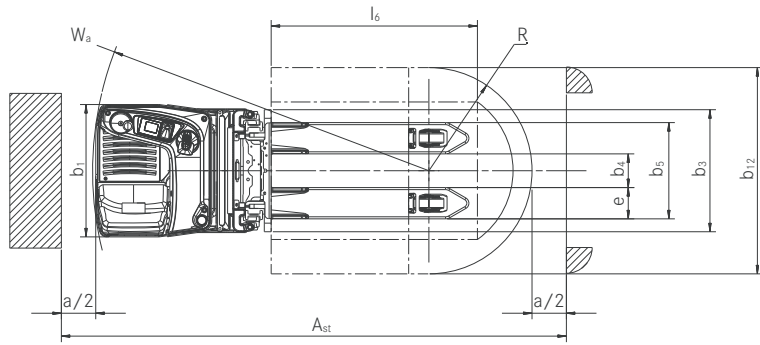
SXD Stand-on Double Deck High Lift Pallet Truck
 Technical Drawings



Side view



Side view



Top view

SXD Stand-on Double Deck High Lift Pallet Truck

Detailed Photos



Even more individual: optional left hand or right hand steering



Individual preferences: also available with a steering knob on the left hand side



Everything in view: perfect visibility of the fork tips increase pallet turnover and safety



Hands-on: the ergonomic joystick for ergonomic and safe work



Just as safe with two pallets: use as double deck or high lift pallet truck



For even tighter areas: also available with a battery door to prevent collisions in tight spaces

SXD Stand-on Double Deck High Lift Pallet Truck
Double load – twice as easy



SXD Stand-on Double Deck High Lift Pallet Truck

Double load – twice as easy

High handling capacity due to very compact chassis and speeds of up to 10 km/h, both unladen and laden

Powerful movement on ramps to increase handling capacity, optional chassis counterbalance increases safety

Intuitive operator guidance as the control unit can be attached on the left or right operating side



The SXD is the truck for the most demanding applications. With the SXD, double deck loading, unloading and loading of lorries or horizontal transport is quick and safe. It saves time by transporting two standard pallets at once to your chosen location. Loads are incredibly easy to move even on ramps due to the optional counterbalance for the chassis. The SXD's strength lies in its flexibility. As a double deck truck, the SXD can transport 800 kg on the mast and, at the same time, 1,200 kg on the initial lift. If the initial lift is not used, the SXD can also be used as a pallet stacker for up to 1,200 kg.

As a pallet truck, the SXD can even transport 2,000 kg on a pallet. This saves time and increases the handling performance. What is more: the SXD is ideally suited as a work or lifting table, and for shelf-filling. Its individuality is reflected in the details, too: the steering wheel on the driver's stand can be positioned on the right- or left-hand side so that individual operator preferences can be considered. This customisation increases safety in the warehouse as the truck can be operated as preferred. Its compact dimensions, enabling it to be used in the smallest of spaces, and the cushioned driver's operating platform complete the whole package and make the SXD the perfect warehouse assistant.

Extensive Equipment

Power

- Effective material handling: driving speed of up to 10 km/h
- Sufficient energy for multi-shift operation: high battery capacity and lateral battery change available
- Sufficient energy for all applications thanks to battery capacities of up to 500 Ah
- Full power: maintenance-free 3 kW three-phase AC drive in 24 V technology
- Powerful movement on ramps due to robust chassis with optional counterbalance
- High handling capacity due to stacking on two decks

Precision

- Effortless work: smooth, precise electrical steering unit
- Compact and mobile: gets to work effortlessly in confined spaces and narrow aisles
- Precise, intuitive operation due to electrical steering unit

Ergonomics

- Individual comfort settings become possible: the truck is available with the steering on either the right- or left-hand side
- Very comfortable to drive: pleasant and low-impact driving because of minimal human vibrations due to spring-loaded operating platform
- Excellent hand controls: the fixed joystick protects the wrist when braking and accelerating
- Easy battery changes: optional lateral battery change makes changing the battery even easier
- Ergonomic and intuitive use: a choice of steering wheel or steering button
- Increased comfort due to cushioned foot plate

Compactness

- Ideal in the smallest of spaces: compact truck dimensions and very high manoeuvrability allow for optimum use of warehouse space
- High pallet reloading rate: compact size allows for quick and safe operation
- Truck width of 770 mm guarantees high manoeuvrability
- Perfect ergonomics: edge-free truck contours

Safety

- Extremely safe cornering: Curve Speed Control automatically adapts speed to the steering angle when cornering
- Extremely safe to drive due to load-based speed limiter
- Extremely stable: low truck centre of gravity makes it safe to use on ramps
- Speed reduction based on lift height

Environmental Responsibility

- Strong and intelligent: Blue-Q efficiency mode allows energy savings of up to 7 per cent at the press of a button, with no loss of performance
- Low operating costs: low energy consumption and long maintenance intervals
- Very few noise emissions due to extremely quiet drive and lifting motor
- Recyclable: over 95 per cent of all installed materials are recyclable

SXD Stand-on Double Deck High Lift Pallet Truck Equipment Variants



		SXD 20
Driver's stand	DIN A4 writing surface	○
	Hydraulic operation using fixed joystick	●
Steering	Fully electric steering unit, steering wheel on the left	●
	Fully electric steering unit, steering wheel on the right	○
	Fully electric steering with reversing function	○
	Fully electric steering with steering knob	○
Tyres	Load rollers, polyurethane, single	○
	Load rollers, polyurethane, tandem	●
	Drive wheel, polyurethane, single	○
	Drive wheel, Vulkollan	●
	Drive wheel, solid rubber	○
	Drive wheel, solid rubber, profiled	○
	Drive wheel, solid rubber, electrically conductive	○
Battery system	Battery compartment 24 V, 375 Ah	●
	Battery compartment 24 V, 500 Ah	○
Safety and performance	Access authorisation (key)	●
	Access authorisation (digicode)	○
	Load backrest	○
	Finger protection on mast (polycarbonate)	○
	Finger protection on mast (grille)	●
	Accident recorder	○
Additional equipment	Bluetooth data interface	●
	Cold store version down to -35 °C	○
	Accessory bar	○
	Automatic counterbalancing	○
	Preparation for data terminal	○
	FleetManager via chip or card	○
	GPRS data transfer	○

● Standard ○ Optional — Not available

STILL



STILL Materials Handling Ltd
Aston Way
Leyland Preston
PR26 7UX
Tel.: +44 (0)845 603 6827

STILL Materials Handling Ltd
Jacks Way
Hill Barton
Business Park
Clyst St. Mary
Exeter
EX5 1FG
Tel.: +44 (0)345 603 6827
info@still.co.uk
For further information please visit:
www.still.co.uk



STILL is certified in the following areas: Quality management, occupational safety, environmental protection and energy management.



first in intralogistics